



Universal Mimaki / Roland Chip Charger Installation and Operation Manual



Programming device for disposable Mimaki and Roalnd chips



Revised 21 October 2009

TABLE OF CONTENTS:

Introduction	2
Installing the ChipCharger Driver for Windows 2000/XP	2
Installing the ChipCharger Software	3
Setting up ChipCharger	3
Charging Chips	3
Verifying Ink Chips.....	4
Notes	4

Introduction

Universal Mimaki / Roland ChipCharger allows you to create chips for any ink type and any color for Mimaki, and for Roland Eco-Max ink type.

ChipCharger has two slots on it: one for OEM-sized chips and another one for Lite-S chips that are used only on bulk systems and refillable cartridges. OEM-sized chips are the ones that must be mounted on a side of a cartridge. The orientation of a chip when it's inserted into a slot is shown on the Charger: the black circuit on a chip must be facing down.



The ChipCharger can re-program used chips. However, the used chips cannot be re-used on the same printer again because the printer remembers the serial numbers of all the chips that were inserted into it.

You will need an Internet connection for the ChipCharger software to operate. It exchanges data with our server when it recharges and verifies the chips.

The system is using recharge credits (called "ink codes"). To recharge a chip you need 1 credit. You automatically get 1 credit for each blank chip purchased from us. However, if you want to reset somebody else's chips, you will need to purchase extra codes.

Installing the ChipCharger Driver for Windows 2000/XP

The driver for ChipCharger will work under Windows 2000, XP, Vista, 32-bit only.

1. Locate your login and password for the ChipCharger. If you were not provided with the login and password, please contact us.
2. Go to this web site: www.solventcartridges.com and click on Tech Support.
3. Click on the link "InkStream Customers Login Here".
4. Enter your login name and password. Click "Login".
5. On the next screen you will see your company information and information about your printers. On the bottom of the screen you will see the links to ChipCharger Software marked as NEW and ChipCharger USB driver (Windows). Download both of them.

6. Unzip the **charger_driver.zip** file into some folder.
7. Connect the ChipCharger to the USB port using the cable provided.
8. Windows should automatically detect it and ask you to locate the driver for it. Do not choose automatic installation, but rather go for manual.
9. Browse into the folder where you unpacked the chip_driver.zip file and select the file Windows is looking for.
10. If you are asked to reboot, please do so. On XP/Vista you don't need to reboot.

Installing the ChipCharger Software

1. Run the charger_setup.exe file you downloaded and install the Charger software.
2. Look for program and run it by going into **Start – All Programs – ChipCharger**.
3. The program should say "**ChipCharger USB connected**". If it says that the device is not found and the driver was already installed, please notify your dealer or us and we will replace the USB device.
4. If your firewall is blocking the Internet access of ChipCharger program, please unblock it. Internet connection is required for operation of the software.

Setting up ChipCharger

In the main ChipCharger window, go to menu **Options – Settings**. Enter your login and password. Make sure to check "**ChipCharger USB device**". Click **Test settings** button. You should get **Success** message. If your login or password are incorrect, you will get "Authorization failed". If a firewall, anti-virus or proxy are blocking ChipCharger from the Internet, you will see "HTTP request failed". Make sure you get Success to be able to use the charger.

Keep 0 codes locally: leave this setting at zero. It's required for other printer types.

Update while in tray: do not check this option.

Use HTTP proxy: enable this only if you are using a proxy server.

Quick charge: this option saves time by skipping a chip write-ability test. If Quick charge is disabled, every chip will be first tested if it can be written. Then it's programmed with a required data. With Quick charge enabled, a chip will be programmed right away. In both cases the chip will be checked if the data has been written correctly.

Press OK and return to the main ChipCharger window.

The **Printer** select box will be empty. Select a required printer type: **Mimaki disposale chips** or **Roland Eco-Max**. Next time the software is started, the Printer box will not be empty.

Note that when you select a printer type the LED on the USB Charger will light up. That means the device is ready.

Charging Chips

Insert a chip in the appropriate slot on the Charger.

Select ink type for Mimaki:

- SS – very first solvent ink for JV3. Now almost not used.
- SS2 – this is the commonly used solvent ink for JV3.
- SS21 – used on JV33 and CJV30.
- HS – Hard Solvent for JV5.
- ES3 – EcoSolvent ink type, used on JV5, JV33, CJV30.
- DyeSub – dye sublimation ink type.
- ReacvieDye – reactive dye ink used on TX3
- Aqueous Pigment – water-based pigment ink type
- GP604 – ink used on garment printer Mimaki GP604.

Select Color.

Select Volume. Default is 440ml, but you can enter any volume up to 440ml.

Press Recharge.

After the chip is charged you will see **Success** in the status window, or **Operation Failed** (if chip is faulty) or **Operation Cancelled** (if you ran out of codes).

When you see the line **Warning: chip performance is not guaranteed**, that means you're using someone else's chips and we do not guarantee it is going to work. **Only blank chips purchased from SolventCartridges are guaranteed to work on the printer.**

Verifying Ink Chips

Verify button provides a very useful and practical function: verification of a chip data. It reports: volume in milliliters, ink type, color, and expiration date. The format of expiry date is MM/YY.

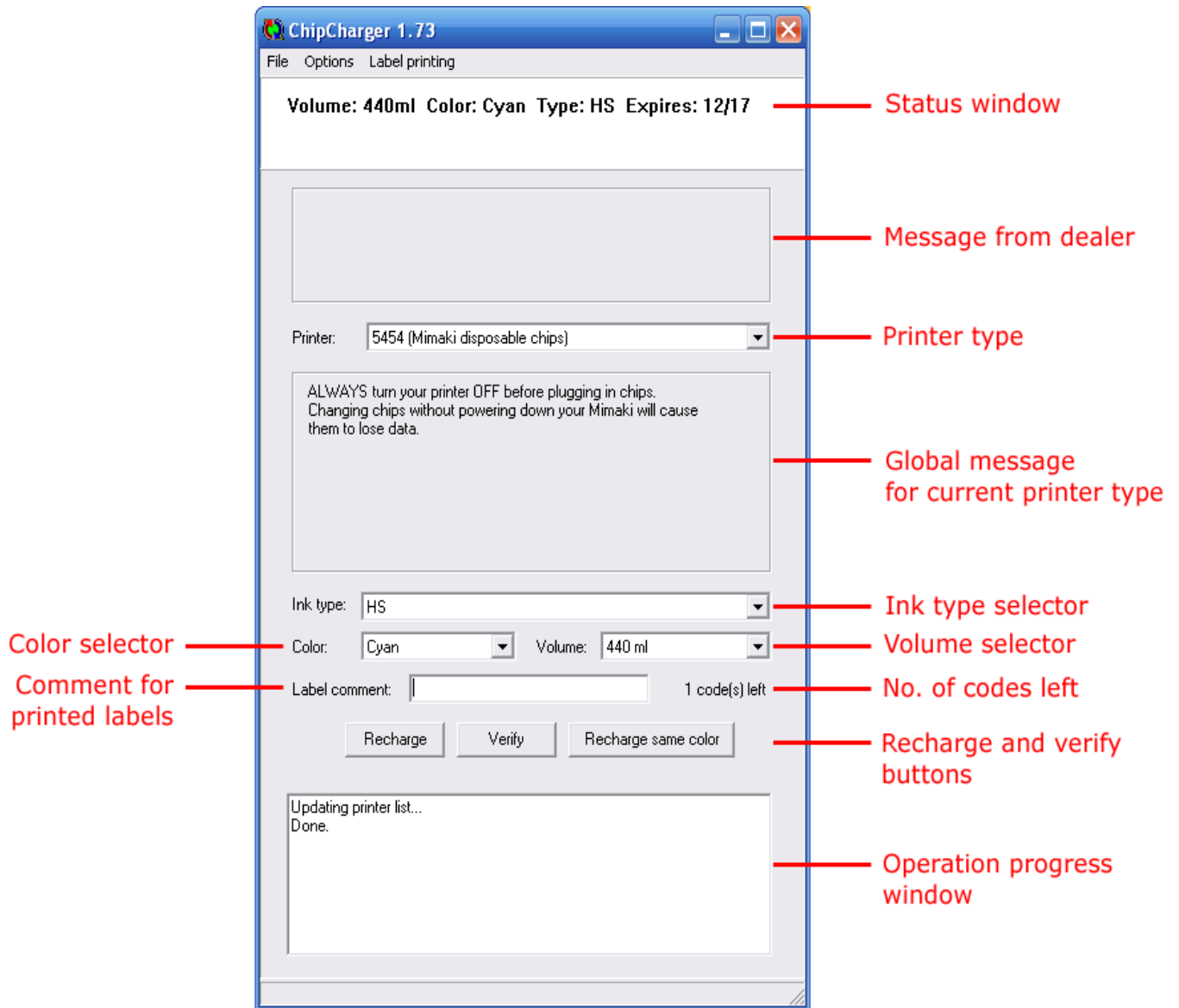
You can verify the previously charged chips for free. Otherwise verification will consume 1 code.

Notes

When charging White SS2 chips, please select volume 220ml. Cartridges with White ink are only available in 220ml version. Any larger volume setting will be rejected by a Mimaki as Non-original ink.

ChipCharger supports label printing, which is very convenient when you program a lot of chips. Here is the manual:

http://www.solventcartridges.com/pdf/label_printer_support.pdf



With your technical questions please contact your dealer or us at:

Telephone: +1 905 820 8833
Fax: +1 905 820 8768
Email: support@solventcartridges.com